



Building with conscience.

Sto Drip Edge Profile

Facades

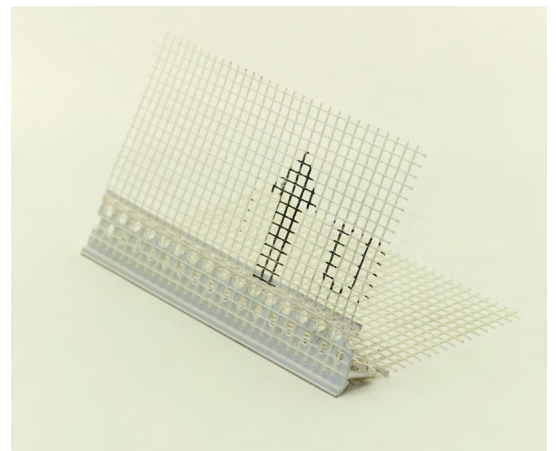


Sto Drip Edge Profile is a PVC accessory with integral reinforcing mesh that creates a drip edge and plaster return in StoTherm® ci and StoQuik® Silver DrainScreen wall systems.



This Sto accessory is intended to control the direction of dripping water and help protect the building enclosure from moisture intrusion in vulnerable areas such as fascia returns, balcony undersides, and other projecting building elements.

Easy-to-apply, Sto Drip Edge Profile eliminates labor and costs associated with cutting of drip reveals in foam insulation. It also provides additional crack resistance thanks to its integral mesh reinforcement and helps achieve straighter, cleaner lines at plaster returns.





Sto Drip Edge Profile Benefits

Cost saving water management detail for parapets, balconies, and other projecting building elements

- Built-in drip edge eliminates labor and costs associated with cutting of drip reveals in the foam insulation
- Made of plastic, easy to cut to size with any cutting knife for a quick application
- Integrated glass fiber mesh facilitates the connection to the facade

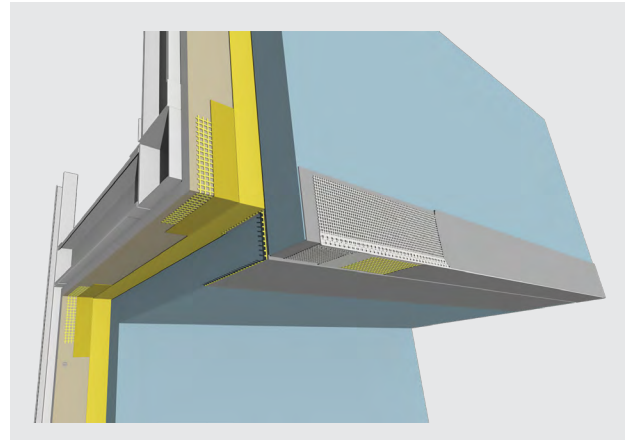
Enhances durability and aesthetic of the cladding system

- One-component detail which assists in both deflection and drainage of water from the building enclosure
- Integral mesh reinforcement provides enhanced crack resistance over the accessory at plaster returns
- Improved aesthetics with straighter, cleaner lines at plaster returns thanks to the factory-manufactured drip edge
- Made of plastic; free of thermal bridges

Integrated 'single-source' solution for greater peace of mind

- Optimal compatibility with other components of Sto wall systems
- Compatible components from a single manufacturer enable efficient application and high level of system safety
- Dealing with a single manufacturer facilitates project planning and material sourcing

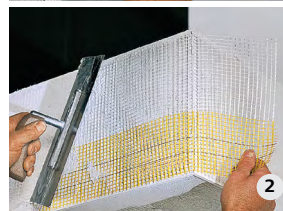
Properties	Made of plastic, with integrated glass fiber mesh
Application	Exterior, for use in areas at risk of dripping water such as fascia returns, balcony undersides, and other projecting building elements in StoTherm® ci and StoQuik® Silver DrainScreen wall system installations
Size	Length 8.2 ft (2.5 m) Mesh leg length 4 in x 4 in (10 x 10 cm)
Color Shade	Off-white
Packaging	20 pieces per box, 164 linear ft (50 m)



Easy Step-by-step application



Apply basecoat at the return area. Align the Sto Drip Edge Profile, press it into place, and fully embed it in the wet basecoat.



Overlap Sto Mesh up to the Sto Drip Edge Profile. Then embed the mesh in the basecoat. Mesh should overlap by at least 4 in (10 cm).



Reinforce the underside of the return area with Sto Mesh. The mesh should overlap by at least 4 in (10 cm) at the connection with the reinforced façade.



Once the basecoat is dry, apply the finish. Remove any protruding finish from the edges.

ATTENTION

Sto products are intended for use by qualified professional contractors, not consumers, as a component of a larger construction assembly as specified by a qualified design professional, general contractor or builder. They should be installed in accordance with those specifications and Sto's instructions. Sto Corp. disclaims all, and assumes no, liability for on-site inspections, for its products applied improperly, or by unqualified persons or entities, or as part of an improperly designed or constructed building, for the nonperformance of adjacent building components or assemblies, or for other construction activities beyond Sto's control. Improper use of Sto products or use as part of an improperly designed or constructed larger assembly or building may result in serious damage to this product, and to the structure of the building or its components. **STO CORP. DISCLAIMS ALL WARRANTIES EXPRESSED OR IMPLIED EXCEPT FOR EXPLICIT LIMITED WRITTEN WARRANTIES ISSUED TO AND ACCEPTED BY BUILDING OWNERS IN ACCORDANCE WITH STO'S WARRANTY PROGRAMS WHICH ARE SUBJECT TO CHANGE FROM TIME TO TIME.** For the fullest, most current information on proper application, clean-up, mixing and other specifications and warranties, cautions and disclaimers, please refer to the Sto Corp. website, www.stocorp.com.

Sto Americas

Sto Corp.
3800 Camp Creek Pkwy
Building 1400, Suite 120
Atlanta, GA 30331
USA

Phone 1-800-221-2397
www.stocorp.com